



UNITED STATES MARINE CORPS

III MARINE EXPEDITIONARY FORCE

UNIT 35601

FPO AP 96382-5601

AND

MARINE CORPS INSTALLATIONS PACIFIC-MCB CAMP BUTLER

UNIT 35001

FPO AP 96373-5001

Canc: Oct 2018

IIIMEF/MCIPAC-MCBBBul 5800

SJA/ILAW

11 OCT 2017

III MARINE EXPEDITIONARY FORCE/MARINE CORPS INSTALLATIONS PACIFIC-MCB CAMP BUTLER BULLETIN 5800

From: Commanding General, III Marine Expeditionary Force
Commanding General, Marine Corps Installations Pacific-MCB Camp Butler
To: Distribution List

Subj: OFF-LIMITS ESTABLISHMENTS AND AREAS

Ref: (a) MCO 1620.2D
(b) MCIPACO 5420.1

Encl: (1) Off-limits Establishments and Areas Designated by the Commanding General, III MEF and the Commanding General, MCIPAC-MCBB

1. Purpose. To identify those establishments and areas which have been declared off-limits to Status of Forces Agreement (SOFA) personnel by the Commanding General, III Marine Expeditionary Force (MEF) and the Commanding General, Marine Corps Installations Pacific-MCB Camp Butler (MCIPAC-MCBB).

2. Cancellation. IIIMEF/MCIPACBul 5800 of 29 July 2016 and IIIMEF/MCIPACBul 5800.2 of 29 July 2016.

3. Background. Reference (a) provides that off-limits action is a function of the command and may be used by commanders to help maintain the health, morale, safety and good order and discipline of our military and civilian communities. Additionally, it requires that off-limits restrictions be publicized to all SOFA personnel who may frequent the area(s) in question. Reference (b) outlines the procedures of the Armed Forces Disciplinary Control Board (AFDCB).

4. Action

a. Commanding officers will inform personnel in their commands that they are prohibited from conducting business with, and entering the premises or boundaries of, the off-limits establishments and areas listed in the enclosure.

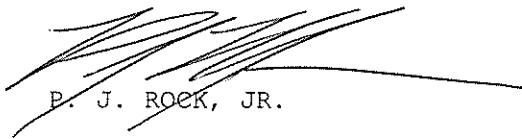
b. The contents of this Bulletin shall be widely disseminated to all SOFA personnel. This Bulletin will be conspicuously posted on all III MEF and MCIPAC-MCBB command bulletin boards.

c. Changes to Off-limits Listing. In accordance with reference (b), the President of the AFDCB is responsible for publishing an accurate and current listing of those establishments/areas declared off-limits quarterly.

DISTRIBUTION STATEMENT A: Approved for public release; distribution is unlimited.

d. Concurrence. This Bulletin has been reviewed and concurred with by the Inspector General's Office, MCIPAC-MCBB; the Office of the Staff Judge Advocate (SJA), III MEF; and the SJA, MCIPAC-MCBB.

5. Applicability. This Bulletin is applicable to all SOFA personnel permanently or temporarily assigned to III MEF and MCIPAC-MCBB units. This includes all military members, all civilian personnel (including contractors), and all family members. This Bulletin constitutes a general regulation. Penalties for violations of this Bulletin include the full range of statutory and regulatory sanctions for civilian and military personnel.



P. J. ROCK, JR.



L. D. NICHOLSON

DISTRIBUTION: III MEF List I, II
MCIPAC-MCBB List A

OFF-LIMITS ESTABLISHMENTS AND AREAS DESIGNATED BY THE
COMMANDING GENERAL, III MEF AND THE COMMANDING GENERAL, MCIPAC-MCBB

An off-limits area is defined as any business, building, place, structure, vehicle, conveyance, or area which Status of Forces Agreement (SOFA) personnel are prohibited to patronize, enter, visit, use or ride. In accordance with reference (b), the installation commander has the authority to place an establishment or area off-limits if it is determined to be harmful to the welfare and safety of Marines, Sailors and their family members. Visiting these establishments or entering these areas violates IIIMEF/MCIPAC-MCBBBul 5800, which is a punitive regulation. SOFA personnel violating IIIMEF/MCIPAC-MCBBBul 5800 may be subject to statutory or regulatory sanctions. As a matter of policy, a change in ownership, management or name of any off-limits establishment does not, in and of itself, revoke the off-limits restriction. Accordingly, the Commanding General, Marine Corps Installations Pacific-MCB Camp Butler and the Commanding General, III Marine Expeditionary Force, based on the recommendations of the Armed Forces Disciplinary Control Board, have declared the following establishments as off-limits to all SOFA personnel. The below listed off-limits areas/establishments will remain off-limits until deleted from this list by subsequent changes to this Bulletin.

Off-limits establishments in Okinawa, Japan

Bar Sakura, 1-10-15, Chuo, Okinawa City, Japan



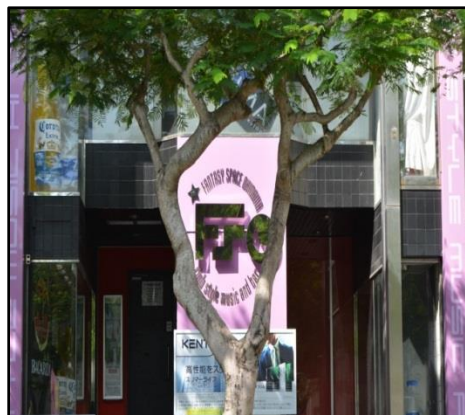
Bon Bon Dou, 1-9-8, Uechi, Okinawa City, Japan



Color, Takara Building, 2-6-34 Makishi, Naha City, Okinawa, Japan



Fantasy Space Okinawa, 2 Chome 17-46 Makishi, Naha



Green House, 1-3-1 Uechi, Okinawa City, Okinawa, Japan



(in vicinity of shown location)



Ground Tobacco Shop, 2F 1-5-9 Mihama, Chatan Cho, Okinawa, Japan



Heaven's Smell (Formerly Samurai King), 1-8-1 Chuo, Okinawa City, Okinawa, Japan



Herb Shop Garu-Garu, 2-7-2 Wakasa, Naha City, Okinawa, Japan



High Times, 1-6-2 Chou, Okinawa City, Okinawa, Japan



(in vicinity of shown location)



Jah Reggae Shop, 1-6-20, Chuo, Okinawa City, Japan



OM's Herb Shop, 3-7-12 (2nd Floor) Yafuso, Urasoe City, Okinawa, Japan



Soft Cream (and distribution service "Lequio Herb"), 1-15-8, Okinawa City,
Okinawa, Japan



(in vicinity of shown location)



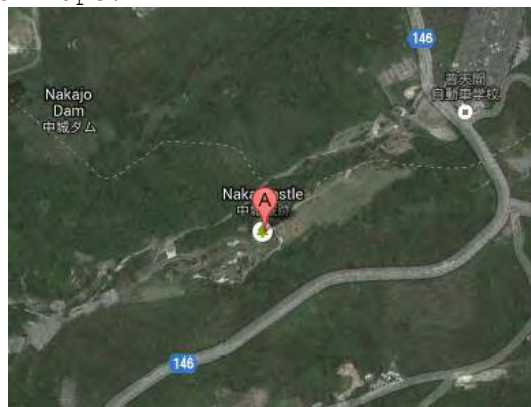
"Soap Land," Area 2, Tsuji District, Naha City is a 3x4 block area within Area 2 consisting of 56 bathhouses. Western boundary of Soap Land is Gas Dori Street and Salada Bowling Alley. Northern boundary is Route 47. Eastern boundary is Route 43. Southern Boundary begins at Gas and 127.668 (longitude and ends at Route 43 and 127.671.



Stoner's Den, 2-17-1, Makishi, Naha City, Okinawa, Japan



Takahara Hotel, adjacent to the Nakagusuku Castle in Ishado Nakagusuku Village, Okinawa, Japan. See below maps.



(adjacent castle depicted on map)

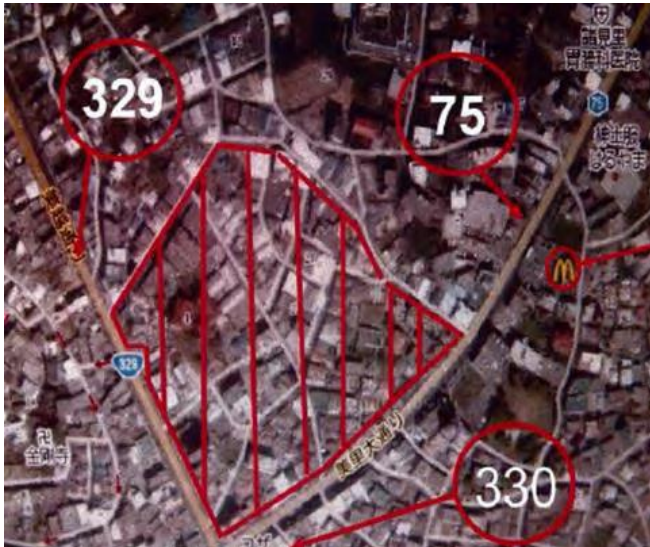
Tokyo Syoten Bookstore, Highway 23 at 820-6 Kamisedo, Chatan-Cho, Okinawa, Japan



Yasu Ichi Bookstore, 2-1-10 Chatan, Okinawa, Japan



Yoshihara Red Light District. In the Yoshihara Red Light District, establishments with a storefront that faces 329 or 330 are not off-limits.



Off-limits establishments in Iwakuni, Japan

BuriBuri NomiB, 1-18 Horikawa-cho, Naka-ku, Hiroshima City, Japan



(in vicinity of shown location)

Joint, 3-22 Yayoi i-cho, Naka-ku, Hiroshima City, Japan



(in vicinity of shown location)

Spice Ecstasy, 4-4 Nagarekawa, Naka-ku, Hiroshima City, Japan



(in vicinity of shown location)